

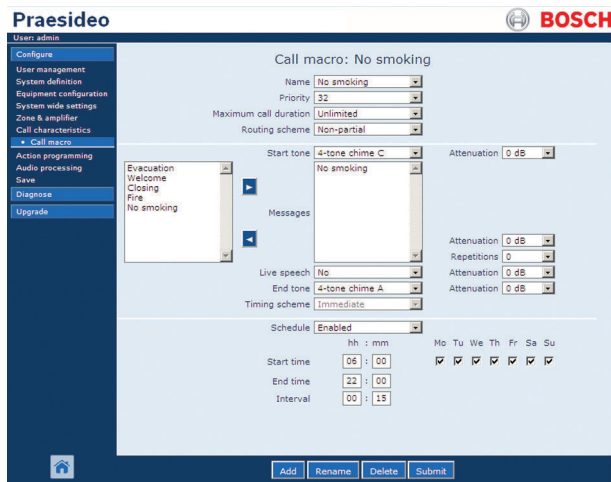
# PRS-SW Praesideo Software

www.boschsecurity.com



**BOSCH**

Invented for life



- ▶ Web-based user interface
- ▶ Can be accessed using a PC with browser
- ▶ Different levels of access rights can be assigned
- ▶ All system and unit parameters can be configured
- ▶ Easy navigation

This software has three parts:

- Configuration software, which is installed in the network controller
- Diagnostic & logging software, which is installed in the network controller, and optionally on a logging PC
- File transfer software, which is to be installed on the configuration PC and supplied together with the network controller

calls and changes in the status of system components, and displays the current status of the system. It can provide real-time logging to a PC.

### File transfer software

The file transfer software transfers both data and message files from the PC to the network controller.

## System overview

### Configuration software

The configuration software is required for every system. Once the configuration data entry has been completed and downloaded to the network controller, the system can operate without the configuration PC. The configuration software is required only during installation and to make changes to an existing system configuration.

The configuration software design allows even first-time users to navigate easily through the configuration.

### Diagnostic and logging software

The main function of the diagnostic & logging software is to monitor and record the status of all elements of the PA system. This software logs all events, such as

## Functions

### Configuration Software

The software supports three access levels: administrator, installer, and user. Each of the three levels carries different access rights.

Call macros allow users to configure various functions and/or actions that can be assigned to inputs such as control inputs and call station keys. The same call macro can be assigned to multiple inputs. A call macro defines: priority, start and end tones, an audio input, a message or sequence of messages, number of repetitions, scheduling with duration and interval, and more.

Zone grouping allows the user to define zones covering the same types of area. In the zone configuration, zone-related items such as amplifier channel outputs, audio outputs and control outputs can be assigned to defined zones.

A power amplifier can be linked to a spare power amplifier so that if there is a fault in the power amplifier it will automatically change over to the spare power amplifier. The ratio of main power amplifiers to spare power amplifiers is flexible, and can be configured to meet specific application requirements. The software can configure all equipment inputs and outputs in the system. All audio inputs and outputs have audio processing facilities, including parametric equalization with high and low-pass filters for inputs and outputs, and gain and limiter adjustments for inputs only. The audio inputs can be set to microphone or line. Delays can be configured for each amplifier output individually. The level of the 20 kHz pilot tone will be adjusted automatically. Keys on call station keypads can be configured with various functions. A call station can be defined as an emergency call station, with the ability to add zones or audio outputs during an announcement. Control inputs can be configured for a sequence of functions. Control inputs can be configured for monitoring lines connected to them for open-circuits and short-circuits. Zones can be configured for various, time-based volume settings. BGM sources can be assigned to music channels, which can be assigned to different zones/audio outputs.

#### Diagnostic and Logging Software

Modes of enquiry supported by the software include general events, call logging, and fault logging. This part of the software allows monitoring the fault status of all units, as well as any status changes in the system. Users can view the last 200 fault messages, which are stored in the network controller. Control inputs can be used for reporting the fault status of third-party equipment, which is not part of the Praesideo system, allowing users to view logged events of monitored external devices. The software also provides control of audible and visual fault indicators. Faults and alarm states can be acknowledged and reset, and the acknowledgement and reset actions are logged. Optionally, a PC-based logging server can store events from multiple systems in a database. This can be accessed remotely by a dedicated Praesideo log viewer program.

#### File Transfer Software

File transfer is protected by user IDs and passwords. The message set (a set with multiple wav files), which has to be stored in the network controller, can be assembled, stored on the PC and sent to the network controller. A configuration file, which has been created in off-line mode, can be transferred to the network controller. The configuration file can also be retrieved from the network controller.

Region	Certification
Europe	CPD

#### Ordering information

##### PRS-SW Praesideo Software

Configuration software, Diagnostic & logging software, File transfer software.

Order number **PRS-SW**

#### Certifications and approvals

Emergency	acc. to EN 60849 / EN 54-16 / ISO 7240-16
-----------	---

**Represented by:**

**Americas:**

Bosch Security Systems, Inc.  
12000 Portland Avenue South  
Burnsville MN 55337, USA  
Phone: +1-800-392-3497  
Fax: +1-800-955-6831  
audiosupport@us.bosch.com  
www.boschsecurity.com

**Europe, Middle East, Africa:**

Bosch Security Systems B.V.  
P.O. Box 80002  
5617 BA Eindhoven, The Netherlands  
Phone: + 31 40 2577 284  
Fax: +31 40 2577 330  
emea.securitysystems@bosch.com  
www.boschsecurity.com

**Asia-Pacific:**

Robert Bosch (SEA) Pte Ltd, Security  
Systems  
11 Bishan Street 21  
Singapore 573943  
Phone: +65 6571 2808  
Fax: +65 6571 2699  
apr.securitysystems@bosch.com  
www.boschsecurity.asia

**China:**

Bosch (Shanghai) Security Systems Ltd.  
201 Building, No. 333 Fuquan Road  
North IBP  
Changning District, Shanghai  
200335 China  
Phone +86 21 22181111  
Fax: +86 21 22182398  
www.boschsecurity.com.cn

**America Latina:**

Robert Bosch Ltda Security Systems Division  
Via Anhanguera, Km 98  
CEP 13065-900  
Campinas, Sao Paulo, Brazil  
Phone: +55 19 2103 2860  
Fax: +55 19 2103 2862  
al.securitysystems@bosch.com  
www.boschsecurity.com